

SAFETY ORGANIZATION(S):

THIS FILTER HAS BEEN FORMALLY RECOGNIZED, CERTIFIED OR APPROVED BY THE LISTED AGENCY. THEREFORE, ALL TEST/REQUIREMENTS SPECIFIED IN THE LATEST REVISION OF THE FOLLOWING AGENCY STANDARDS HAVE BEEN MET:

UL RECOGNIZED
 CSA CERTIFIED
 VDE APPROVED
 UL 1283
 CSA 22.2, NO.0,0.4,8
 VDE 565-3

OPERATING SPECIFICATIONS:

LINE VOLTAGE/CURRENT:
 4 AMP., 120/250 VAC
 3 AMP./40°C, 250 VAC
 50-60Hz
 LINE FREQUENCY:
 .3mA @ 120V 60Hz
 .5mA @ 250V 50Hz
 MAX. LEAKAGE CURRENT, EACH LINE TO GROUND
 OPERATING AMBIENT TEMP. RANGE:
 -10°C TO +60°C @ RATED CURRENT, I_r

IN AN AMBIENT, T_a, HIGHER THAN 60°C, THE MAXIMUM OPERATING CURRENT, I_o, IS AS FOLLOWS:

$$I_o = I_r \sqrt{\frac{85 - T_a}{25}}$$

RELIABILITY SPECIFICATIONS:

STORAGE TEMPERATURE:
 -40°C TO +85°C
 HUMIDITY:
 21 DAYS @ 40°C 95% RH
 CURRENT OVERLOAD TEST:
 6 TIMES RATED CURRENT FOR 8 SECONDS

TEST SPECIFICATIONS:

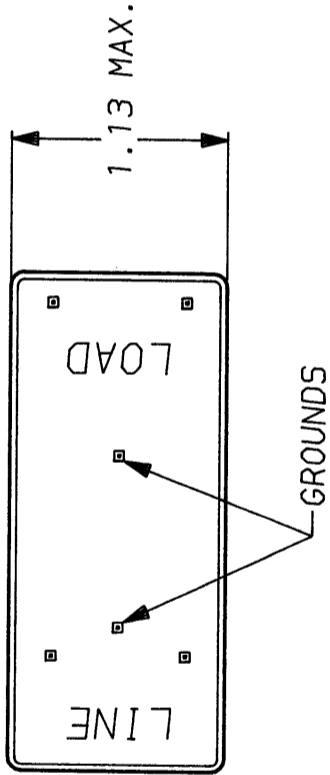
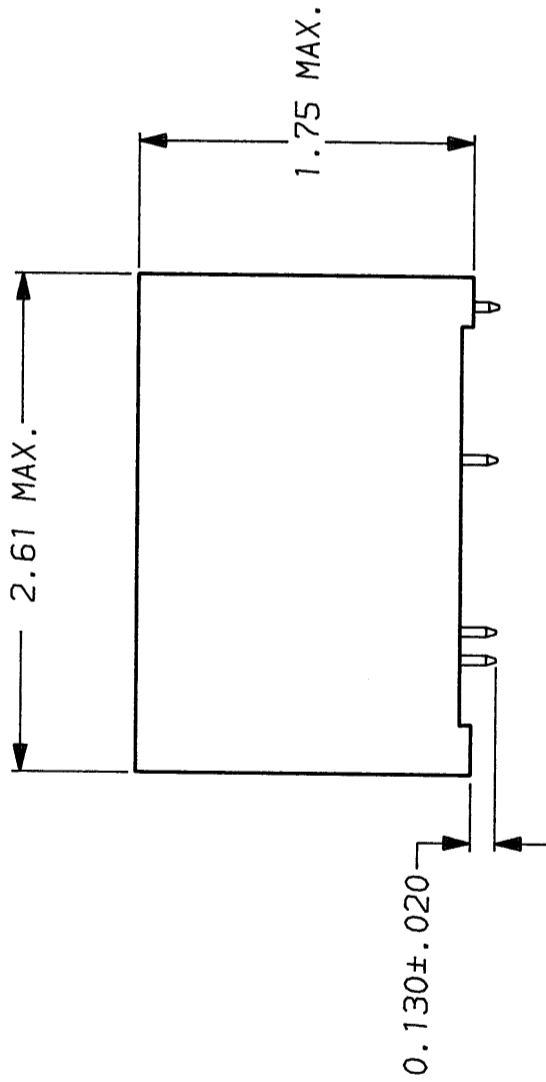
INDUCTANCE:
 CAPACITANCE: (MEASURED @ 1 KHz, 0.25 VAC MAX., 25°C ±1°C)
 LINE TO GROUND:
 LINE TO LINE:
 DISCHARGE RESISTOR:
 LINE/GROUND AND LINE/LINE
 INSULATION RESISTANCE
 (WITHOUT DISCHARGE RESISTOR)
 4.68mH NOMINAL
 8000pF ±20%
 0.43µF ±20%
 560 KΩ
 6000 MΩ (MIN) AT 100 VDC
 20°C AND 50% RH

RECOMMENDED RECEIVING INSPECTION HIPOUT:

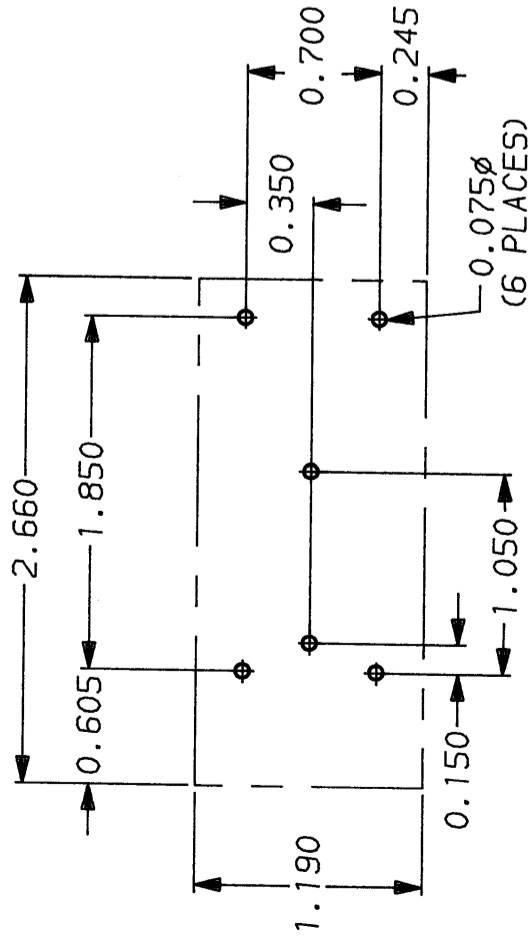
LINES TO GROUND:
 LINE TO LINE:
 2250 VDC FOR 1 MINUTE
 1450 VDC FOR 1 MINUTE

FILTER APPROVAL:

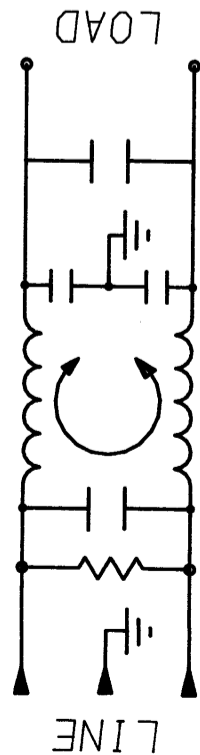
THE BEST WAY TO SELECT AND QUALIFY A FILTER IS FOR YOUR ENGINEERING TO TEST THE UNIT IN YOUR EQUIPMENT.



PINS: .065 MAX. DIAGONAL (6 PLACES)



RECOMMENDED MOUNTING HOLES & CLEARANCE AREA TOLERANCE UNLESS OTHERWISE SPECIFIED: ±.006

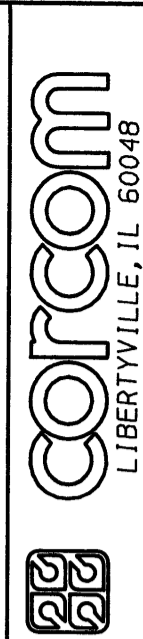


| 50Ω - 50Ω (MINIMUM) INSERTION LOSS | | | | | | | | | | |
|------------------------------------|-----|-----|-----|-----|-----|----|----|----|----|----|
| FREQUENCY MHz | .01 | .05 | .07 | .15 | .50 | 1 | 5 | 10 | 30 | 30 |
| COMMON dB | 5 | 18 | 21 | 28 | 45 | 40 | 40 | 40 | 36 | 36 |
| DIFF. dB | — | 6 | 18 | 41 | 67 | 75 | 70 | 65 | 55 | 55 |

This document is proprietary to CORCOM INC. and is not to be reproduced nor used for manufacturing purposes except on CORCOM's order or prior written consent.

TOLERANCE EXCEPT AS NOTED
 DECIMAL: .XXX .XX .X ANGLES ± 1°
 ENGLISH: ±.025
 METRIC: ±

MATERIAL: AS SUPPLIED



POWER LINE FILTER

SCALE: NTS DATE: 2-8-87
 DRW. BY: LJD ORIGINATOR: CFW
 DRG. NO.: 4EYP.04
 REV.: 04

FINISH: